

Pneumatic drive bellows pumps

A small, lightweight and low-cost pump series has been realized owing to an increased stroke speed.



The FS series represents the latest air-driven bellows pumps developed by drawing upon our high level of expertise which was established through years of experience and achievement.



A small, lightweight and low-cost pump series has been realized owing to an increased stroke speed.

The FS series represents the latest air-driven bellows pumps developed by drawing upon our high level of expertise which was established through years of experience and achievement. The increased speed of pump strokes enabled us to reduce the size and weight of the product and accompanying manufacturing costs. The FS series pumps are easy to operate as each is usable in a wide range of liquid temperatures. The heart of the pump is the versatile R-shaped bellows which are employed to make high-pressure discharge possible and ensure a long life. The FS series can deal with a number of difficult tasks; from circulation of washing water and circulation/transfer of CMP slurry to the feeding of chemical liquid.

High-speed Strokes

An increase in the speed of pump strokes (240 spm maximum) resulted in a reduction of size, weight and costs involved in the manufacture of the pump as well as a decrease in pulsation.

Note: Pump strokes are different depending on the pump model. For details, please refer to the table of specifications.

Contamination-free Design

All of the parts which come into contact with liquid are made of fluororesin. The pump is designed so no metal portion is exposed. The exterior is also coated with fluororesin. The use of a shaft seal (patent pending), our own development, has the effect of remarkably decreasing the production of particles.

Wide Range of Liquid Temperatures/ High-Pressure Discharge

As it can handle liquids with temperatures ranging from 5 - 180°C with discharge pressures up to 0.45MPa, the pump is usable not only for washing processes and CMP processes but also for feeding chemical liquids.

Facility of Maintenance

The proximity switch can be replaced without disassembling the pump and regular tightening of stud bolts is unnecessary, resulting in reduced downtime.

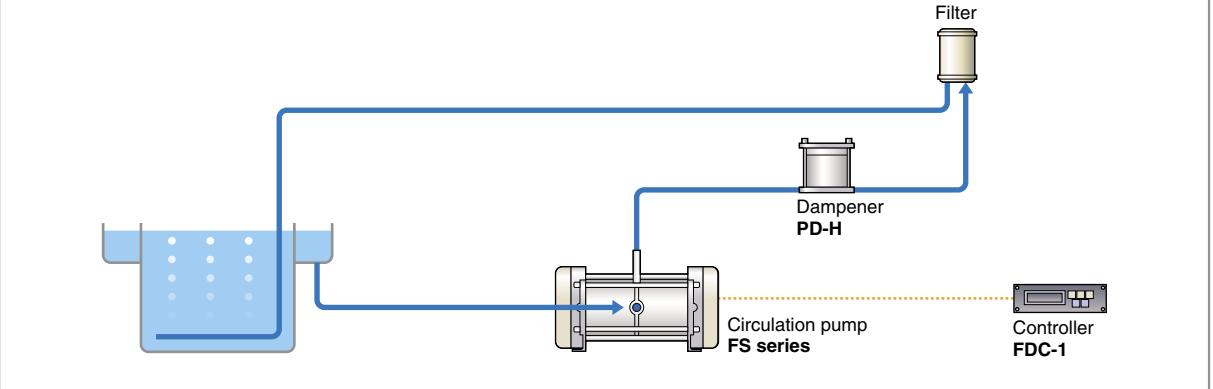
Sensor Drive System

The pump uses the sensor drive system which opens/closes the solenoid by means of a proximity switch built internally. Therefore, when connected to various controllers, the discharge can be controlled or managed easily.

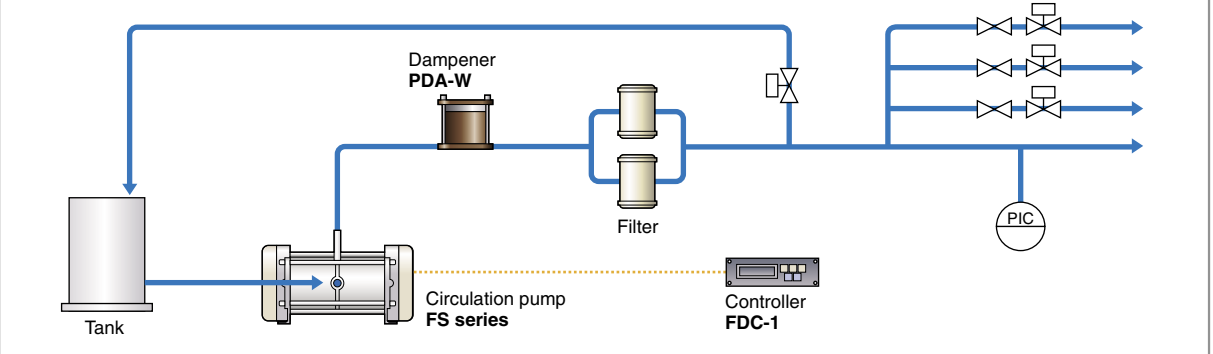


Example of Installation

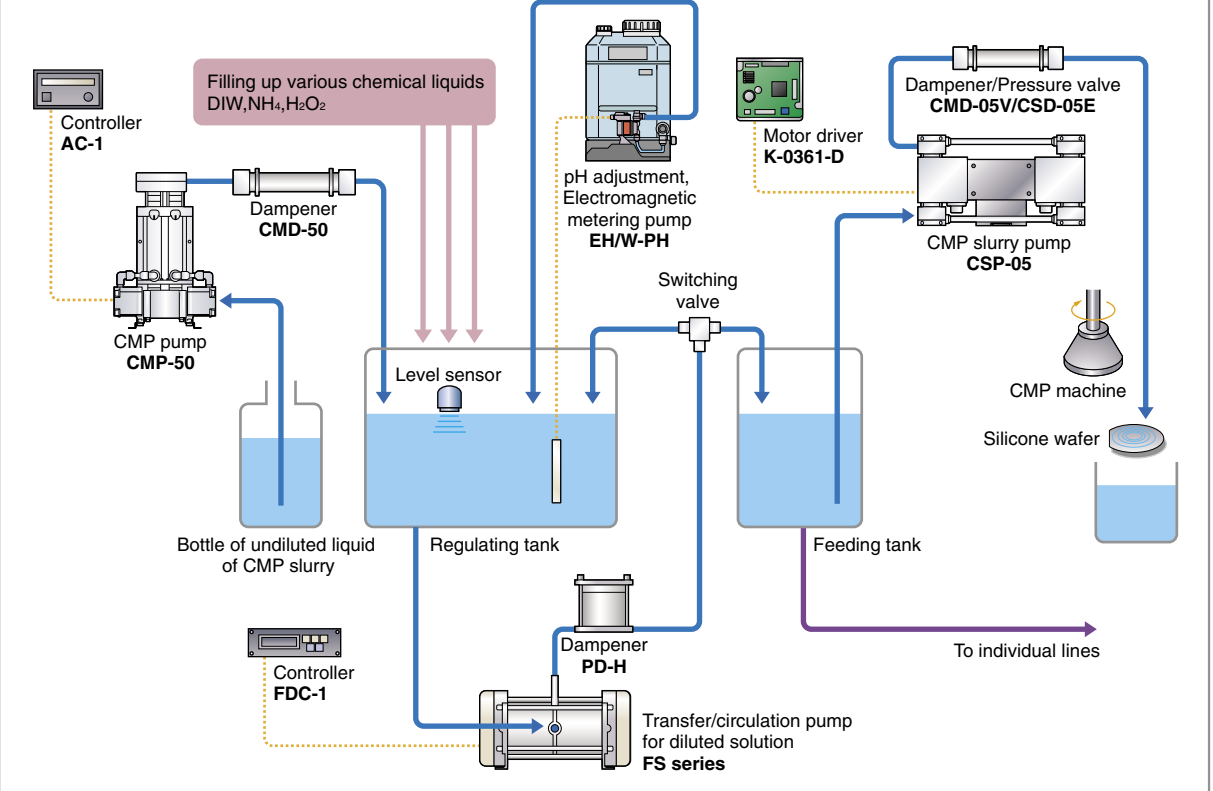
200/300mm wafer wet-bench



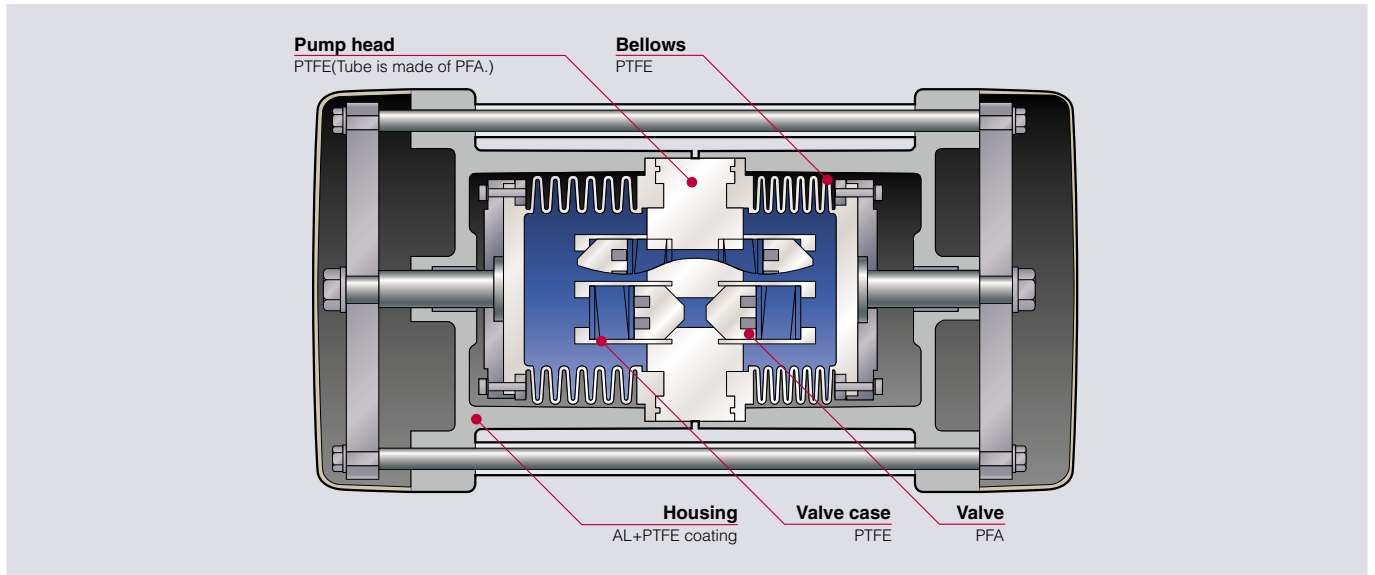
Chemical supply system



CMP slurry supply equipment



Construction and materials



Specifications

Model		FS-15HT1/T2			FS-30HT1/T2			FS-60HT1/T2		
Max. discharge capacity	L/min	15			30			55		
Max. air supply pressure	MPa	0.15 – 0.5	0.15 – 0.3	0.15 – 0.2	0.15 – 0.5	0.15 – 0.3	0.15 – 0.2	0.15 – 0.5	0.15 – 0.3	0.15 – 0.2
Liquid temperature range	°C	5 – 50	51 – 100	101 – 180	5 – 50	51 – 100	101 – 180	5 – 50	51 – 100	101 – 180
Max. air consumption	NL/min	200	160	110	370	280	170	670	440	300
Max. stroke speed*	spm	240			220			200		
Pump connection size		1/2" PFA tube			ø19xø16mm PFA tube			ø25xø22mm PFA tube		
Supply air connection size		Rc1/4			Rc1/4			Rc3/8		
Ambient temperature	°C	0 – 40								
Drive system		By proximity switch								

*180 spm maximum with feed air pressures between 0.3 and 0.5 MPa.

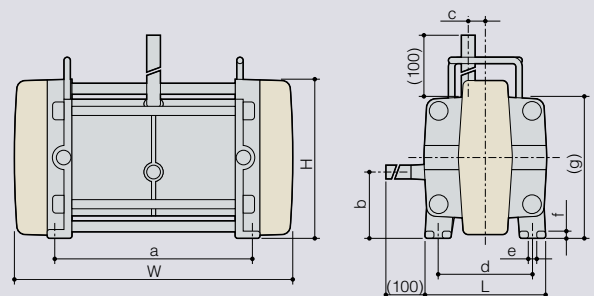
Pump identifications

FS - 15 H T1 - 01

- Series code**
Iwaki pneumatic drive bellows pump
FS series
- Pump size**
15: Max. discharge capacity 15L/min
30: Max. discharge capacity 30L/min
60: Max. discharge capacity 55L/min
- Liquid temperature**
H: Usable for 180°C
- Sealing structure of pump head/bellows**
T1: Tube connection (suction opening / discharge opening) / Bellows separation type
T2: Tube connection (suction opening / discharge opening) / Welded one-piece structure
- Special specification**
Without code: Standard specification
01: Special specification (01,02 ...)

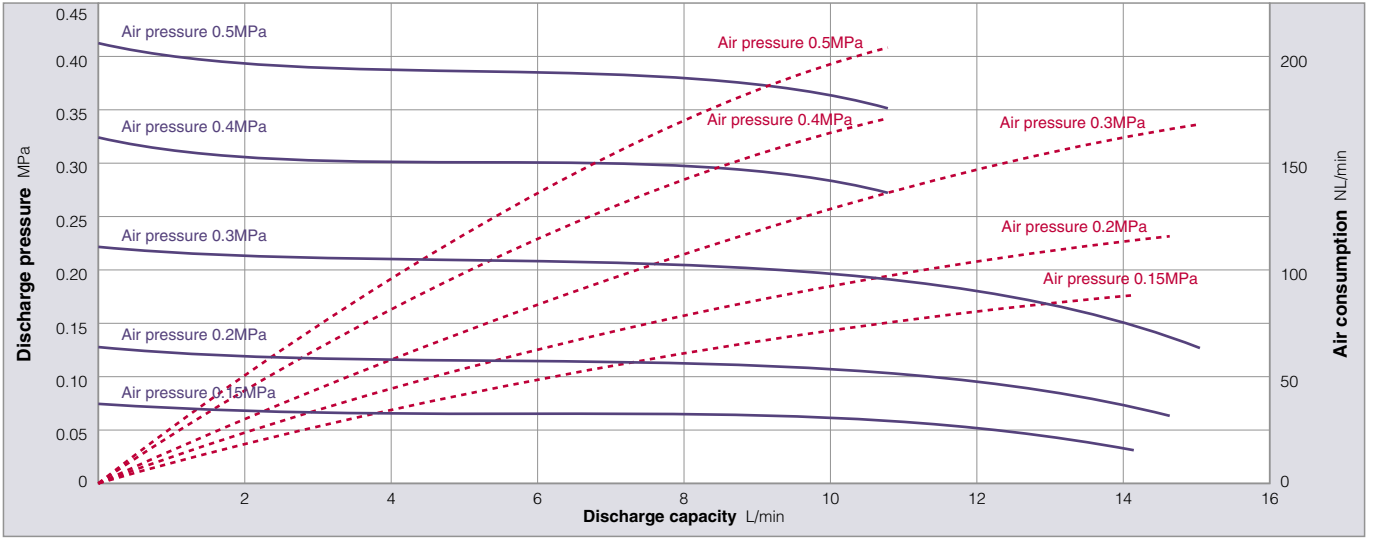
Dimensions in mm

Model	W	L	H	a	b	c	d	e	f	g
FS-15HT1/T2	315	120	166	213	77	15.5	96	10	8	144
FS-30HT1/T2	390	151	208	272	93	23	115	10	9	180
FS-60HT1/T2	441	194	251	317	107	27	152	12	11	224

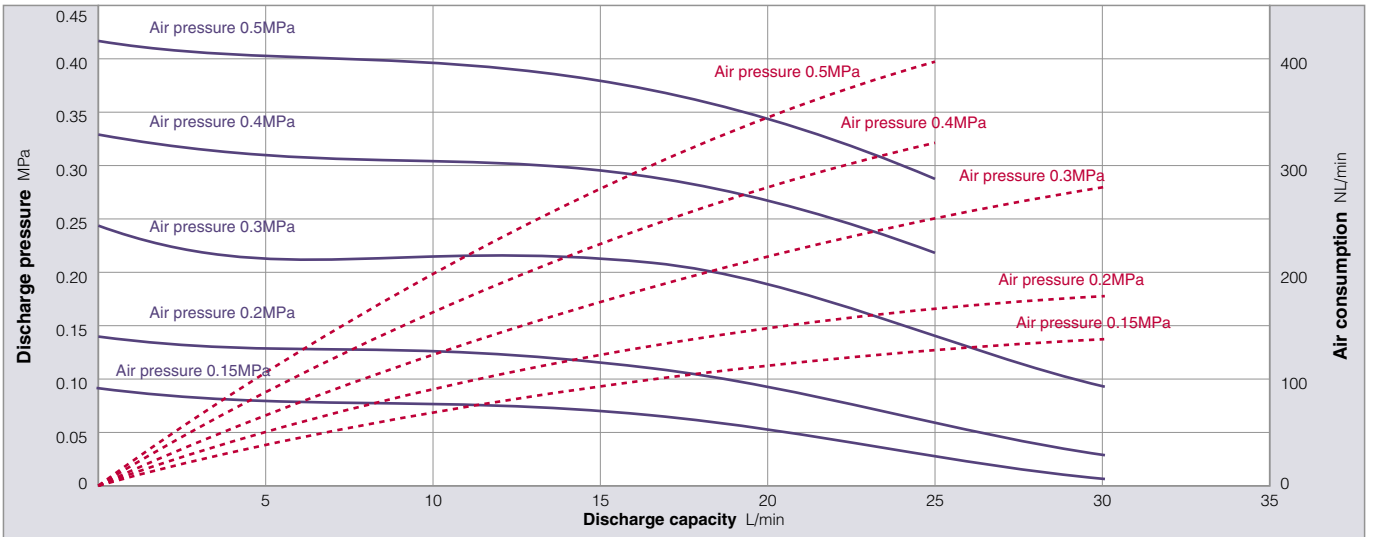


Performance curves

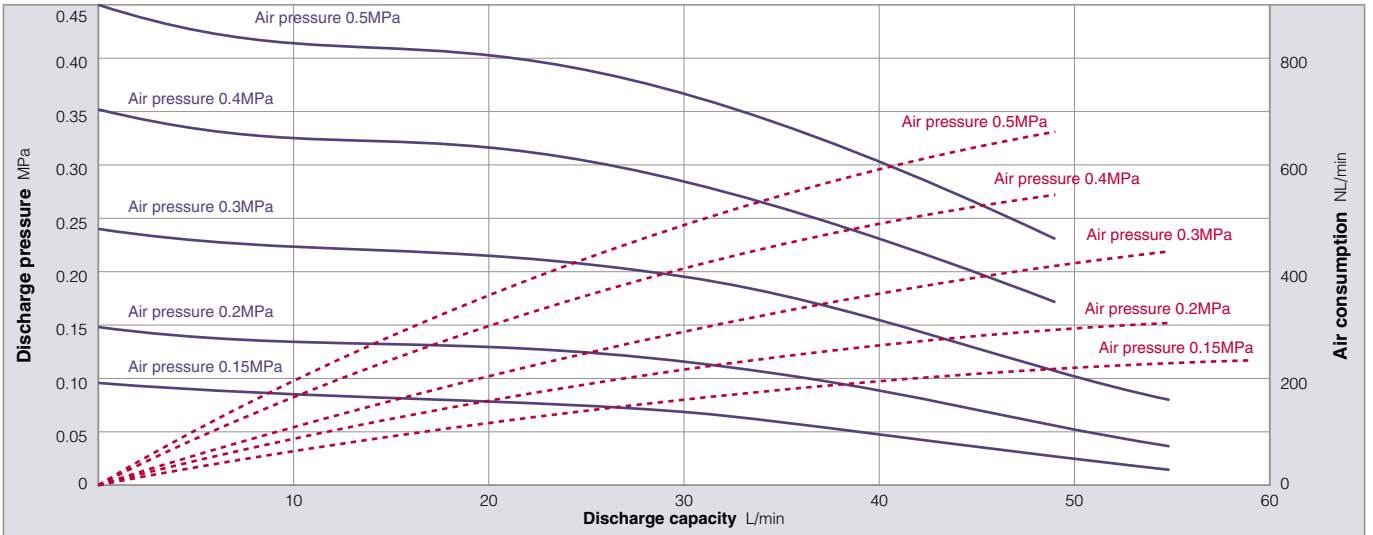
FS-15HT1/T2



FS-30HT1/T2



FS-60HT1/T2



Optional accessories

Dampener

Installation of a dampener on the discharge side of the pump will reduce pulsation and prevents particle formation through filter and pipe vibration.

PD-H (for wet use)

This compact and low-cost dampener is exclusively for wet use. It is constructed so that liquid can be drained from the bellows easily. A leak sensor is included in its standard equipment.



PDA-W (for chemical supply system)

This dampener is well suited for feeding chemicals because of its high pressure specification. The ranges of liquid temperatures are 10 to 180°C.



Specifications

Model	PD-15H		PD-30H		PD-60H	
Applicable pumps	FS-15HT1/T2		FS-30HT1/T2		FS-60HT1/T2	
Max. supplied air pressure MPa	0.3	0.2	0.3	0.2	0.3	0.2
Liquid temperature range °C	5 - 100	101 - 180	5 - 100	101 - 180	5 - 100	101 - 180
Connection size	1/2" PFA tube		3/4" PFA tube		ø25 x ø22mm PFA tube	
Supply air connection size	Rc1/8					
Wet-end materials	PTFE, PFA					

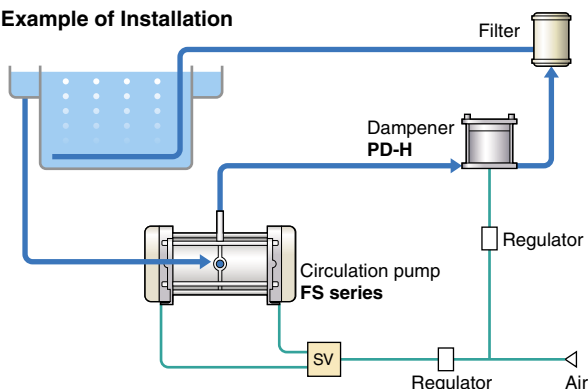
Note: Unusable under higher pressure than the specified level.

Specifications

Model	PDA-20W		PDA-40W	
Applicable pumps	FS-15,30HT1/T2		FS-60HT1/T2	
Max. supplied air pressure MPa	0.5			
Liquid temperature range °C	10 - 180			
Connection size	ø19 x ø16mm PFA tube		ø25 x ø22mm PFA tube	
Supply air connection size	Rc1/4			
Wet-end materials	PTFE, PFA			

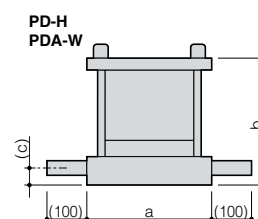
Note: Unusable under higher pressure than the specified level.

Example of Installation



Dimensions in mm

Model	a	b	c
PD-15H	110	110	19.5
PD-30H	116	124	22.5
PD-60H	142	186	25.5
PDA-20W	148	215	33
PDA-40W	188	255	36



Quick Exhaust Valve

Its installation on the discharge side of the pump will reduce pulsation and prevent particle formation through filter and pipe vibration.

Quick Exhaust Valve QEV

When this is installed between the pump and the solenoid, corrosion of the solenoid due to return air is prevented. It also reduces exhaust resistance to allow the bellows to move smoothly.



Specifications

Model	Connection size	Applicable pumps
QEV-8V	Rc1/4	FS-15,30HT1/T2
QEV-10V	Rc3/8	FS-60HT1/T2

Pump Controller/Driver

The solenoid is turned on and off in response to signals from the built-in proximity switch of the pump which reliably drives the pump. Two types of controllers and one type of driver are available.

Pump controller FDC-1

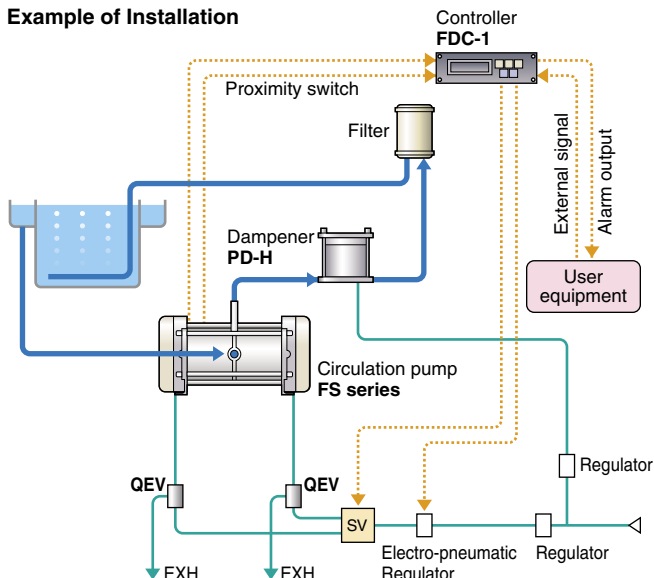
As it controls the pump at a fixed level of discharge when it is connected to an electro-pneumatic regulator, stable circulation and filtration continue despite possible fluctuation of a discharge load due to clogging of the filter or some other reason. Since the difference between the inside pressure and the outside pressure of the bellows can be held at a minimum level, an increase in the life of the bellows is to be expected. Monitoring of the flow rate, the number of strokes and total count are possible. There are two operation modes; the AUTO mode by external signals and the MANU mode for manual operation. In addition to the sensor mode for operation by the proximity switch, the timer mode is provided as standard equipment. This means that if the proximity switch fails, the operation can be continued in the timer mode. Alarm displays such as leak alarm, pump malfunction alarm are available.



Specifications

General specification	Power source	DC24V ±10%
	Power consumption	24VA max.
	Ambient temperature	0 – 50°C
	Working atmosphere	Without corrosive gas in surrounding areas
Input specification	Start, Alarm reset	No-voltage contact or open collector Voltage ON: 3V maximum Voltage OFF: 18V maximum
	Output specification (external output)	Leak alarm
Pump malfunction alarm		
Life alarm		
First alarm		
Dimensions in mm	W158 x D152 x H48	

Example of Installation



Pump controller AC-1

This is a low-cost controller. It has alarm functions for any abnormal stoppage of the pump or breaking of the bellows.



Specifications

Power source	AC100V10% 50/60Hz	
Power consumption	24VA max.	
Ambient temperature	0 – 60°C	
Working atmosphere	Without corrosive gas in surrounding areas	
External output	Detection of break of bellows	Output form: Relay contact output AC250V 5A
	Time-up function	
Dimensions in mm	W144 x D146 x H72	

Pump driver FD-3



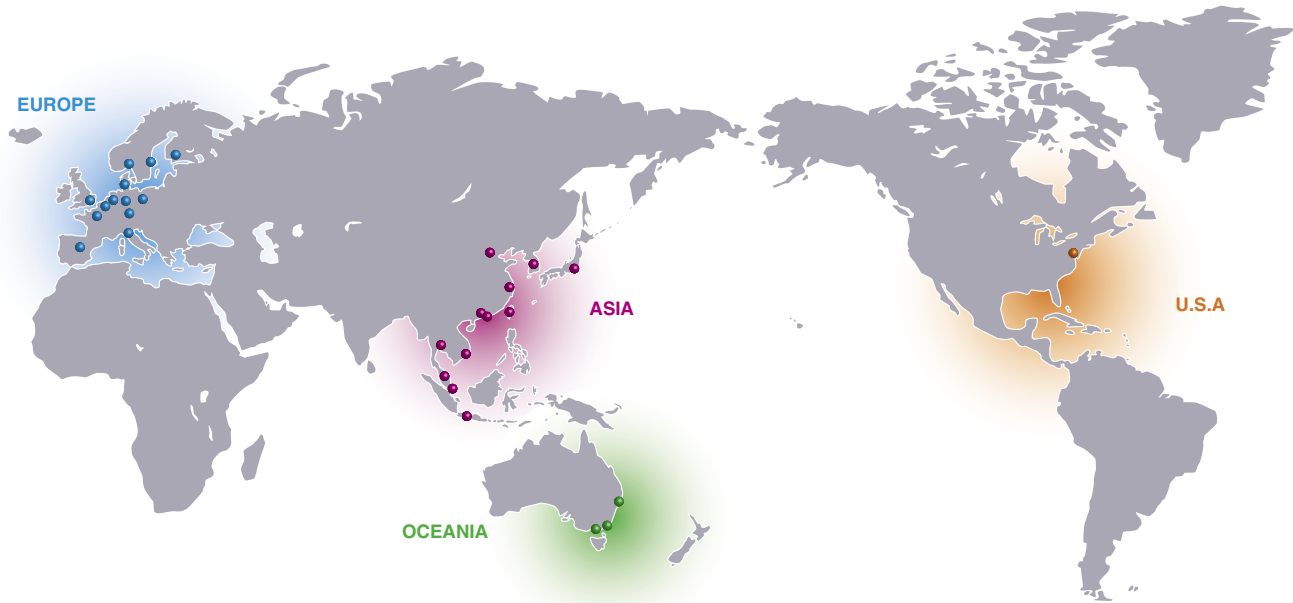
As it controls the pump at a fixed level of the discharge when it is connected to an electro-pneumatic regulator (available as an option), stable circulation and filtration continues despite possible fluctuation of a discharge load due to clogging of the filter or some other reason. Since the difference between the inside pressure and the outside pressure of the bellows can be kept at a minimum level, an increase in the life of bellows is to be expected. It is possible to set or change the remote control and the number of strokes by external signals. The length of time required for one shot of the pump (reference time) can be set. If the pump operates within a period which is less than the reference time, the time-up alarm is output to provide an alert concerning the malfunctioning of the pump. If the bellows break, a leak alarm is output. The cost is quite reasonable.

Note: A flow indicator, a feed air pressure indicator and an integrating stroke indicator are available as options. For details of these products, please call us.

Specifications

General specification	Power source	DC24V10%	
	Power consumption	24VA max.	
	Ambient temperature	0 – 55°C	
	Working atmosphere	Without corrosive gas in surrounding areas	
Input specification (external input)	External starting signal	AUTO operation	Relay contact
	External stroke-number change signal	Input impedance	0 – 100% at 0 – 5
		AUTO operation	Relay contact Contact ON: Variable by external signal Contact OFF: Variable by volume
	Switching of maximum stroke number of pump	4-stage switching by dip switch in printed board	
Output specification	Leak alarm	Output form	Relay contact output
	Time-up alarm output		DC30V 5A
Dimensions in mm	W120 x D120 x H40		

IWAKI World-wide Network



EUROPE

European office : IWAKI Europe GmbH	TEL: (49)2154 9254 0	FAX: 2154 9254 48
Austria : IWAKI (Austria) GmbH	TEL: (41)26 674 93 00	FAX: 26 674 93 02
Belgium : IWAKI Belgium N.V.	TEL: (32)13 67 02 00	FAX: 13 67 20 30
Denmark : IWAKI Nordic A/S	TEL: (45)48 24 2345	FAX: 48 24 2346
Finland : IWAKI Suomi Oy	TEL: (358)9 2745810	FAX: 9 2742715
France : IWAKI France S.A.	TEL: (33)1 69 63 33 70	FAX: 1 64 49 92 73
Germany : IWAKI Europe GmbH	TEL: (49)2154 9254 50	FAX: 2154 9254 55
Holland : IWAKI Holland B.V.	TEL: (31)297 241121	FAX: 297 273902
Italy : IWAKI Italia S.R.L.	TEL: (39)02 990 3931	FAX: 02 990 42888
Norway : IWAKI Norge AS	TEL: (47)66 81 16 60	FAX: 66 81 16 61
Spain : IWAKI Iberica Pumps, S.A.	TEL: (34)943 630030	FAX: 943 628799
Sweden : IWAKI Sverige AB	TEL: (46)8 511 72900	FAX: 8 511 72922
Switzerland : IWAKI (Schweiz) AG	TEL: (41)26 674 93 00	FAX: 26 674 93 02
U.K. : IWAKI Pumps (UK) Ltd.	TEL: (44)1743 231363	FAX: 1743 366507

ASIA

China		
Hong Kong : IWAKI Pumps Co., Ltd.	TEL: (852)2607 1168	FAX: 2607 1000
Shanghai : IWAKI Pumps (Shanghai) Co., Ltd.	TEL: (86)21 6272 7502	FAX: 21 6272 6929
Guangzhou : GFTZ IWAKI Engineering & Trading Co., Ltd.	TEL: (86)20 8435 0603	FAX: 20 8435 9181
Beijing : GFTZ IWAKI Engineering & Trading Co., Ltd. (Beijing office)	TEL: (86)10 6442 7713	FAX: 10 6442 7712
Korea : IWAKI Korea Co., Ltd.	TEL: (82)2 2630 4800	FAX: 2 2630 4801
Malaysia : IWAKI M Sdn. Bhd.	TEL: (60)3 7803 8807	FAX: 3 7803 4800
Singapore : IWAKI Singapore Pte Ltd.	TEL: (65)6316 2028	FAX: 6316 3221
Indonesia : IWAKI Singapore (Indonesia Branch)	TEL: (62)21 6906606	FAX: 21 6906612
Taiwan : IWAKI Pumps Taiwan Co., Ltd.	TEL: (886)2 8227 6900	FAX: 2 8227 6818
Thailand : IWAKI (Thailand) Co., Ltd.	TEL: (66)2 322 2471	FAX: 2 322 2477
Vietnam : IWAKI Pumps Vietnam Co., Ltd.	TEL: (84)613 933456	FAX: 613 933399

U.S.A.

U.S.A. : IWAKI America Inc.	TEL: (1)508 429 1440	FAX: 508 429 1386
-----------------------------	----------------------	-------------------

OCEANIA

Australia : IWAKI Pumps Australia Pty Ltd.	TEL: (61)2 9899 2411	FAX : 2 9899 2421
--	----------------------	-------------------

() Country codes



IWAKI Saitama plant



IWAKI Miharu plant

www.iwakipumps.jp

IWAKI CO.,LTD. 6-6 Kanda-Sudacho 2-chome Chiyoda-ku Tokyo 101-8558 Japan TEL : (81)3 3254 2935 FAX : 3 3252 8892

Caution for safety use: Before use of pump, read instruction manual carefully to use the product correctly. Actual pumps may differ from the photos. Specifications and dimensions are subject to change without prior notice. For further details please contact us.

Legal attention related to export.

Our products and/or parts of products fall in the category of goods contained in the Export Trade Control Order Attachment List 1 of Japanese export control regulations, which includes complementary export control items. Please be reminded that export license, which is issued by the Ministry of Economy, Trade, and Industry in Japan could be required when products are exported from Japan.